
ChildPlus DataEngine

What's New in Release 1.25



CHILDPLUS[®]

THE NATION'S PREMIER HEAD START SOFTWARE

Management Information Technology USA, Inc.

1117 Perimeter Center West

Suite W300

Atlanta, GA 30338

Corporate: (404) 252-6674

Fax: (404) 252-7337

Sales: (800) 888-6674

Internet: www.childplus.com

CHILDPLUS is a registered trademark of Management Information Technology USA, Inc.

Microsoft®, Windows®, Excel®, Word®, Vista™, and .Net® are registered trademarks of Microsoft Corporation.

Information in this document is subject to change without notice. Companies, names and data used in examples herein are fictitious unless otherwise noted.

3/2007

Table of Contents

Table of Contents	3
What's New in Version 1.25	4
Updating to Version 1.25.....	4
Update Enhancements	4
Enhancements	5
Enrollment	5
Family Intake	5
Health Requirements.....	6
Immunizations	6
Immunization Schedule Setup.....	7
Printed Immunization Records	7
Fixes.....	8
Reports.....	9
New Reports.....	9
CACFP Reimbursement Summary (2371)	9
LiveReport	10
Attendance.....	10
Program Terms.....	10
Modifications to Existing Reports	10

What's New in Version 1.25

Version 1.25 is a maintenance release of ChildPlus DataEngine. ChildPlus incorporated numerous enhancements and fixes into this release. The following table summarizes where to find the different items addressed in version 1.25:

Quick Reference Guide to ChildPlus Version 1.25	
For more information on....	See page....
Enhancements	5
Reports	6

Updating to Version 1.25

For detailed instructions on how to perform the update to version 1.25, visit the **DataEngine Update Web Page** or click [here](#).



Note: If you are having trouble opening the link for the update instructions, type the following address into the address bar on your browser: [http://www.childplus.com/deupdates/UpdatingChildPlus DataEngine.pdf](http://www.childplus.com/deupdates/UpdatingChildPlusDataEngine.pdf)



Note: Clients with data hosting contracts do not need to perform the update because ChildPlus has already installed it for you.

Update Enhancements

ChildPlus has optimized the automatic updating process to minimize the number of files that are downloaded. ChildPlus DataEngine now takes significantly less time to update itself and can update itself over a slower Internet or WAN connection.



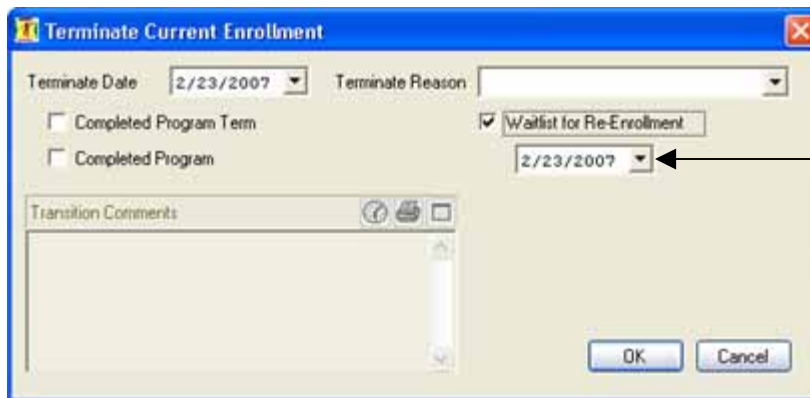
Note: If ChildPlus DataEngine is not able to update itself after an update has been applied to the database, this is most likely because the user does not have full control of the ChildPlus folder. The user running ChildPlus DataEngine must have full control of the ChildPlus folder, however, they do NOT need to be an Administrator or have any other special permission.

Enhancements

ChildPlus DataEngine version 1.25 includes several enhancements. These enhancements include changes to the following screens: **Enrollment**, **Family Intake**, **Health Requirements**, and **Immunizations**.

Enrollment

When you terminate a participant and check the **Waitlist for Re-Enrollment** box, ChildPlus will now automatically populate the waitlist date with the same date you specified in the **Terminate Date** field.



The screenshot shows a dialog box titled "Terminate Current Enrollment". It has a "Terminate Date" dropdown set to "2/23/2007" and a "Terminate Reason" dropdown. There are two checkboxes: "Completed Program Term" and "Completed Program", both unchecked. A "Waitlist for Re-Enrollment" checkbox is checked. Below it, a "Waitlist Date" dropdown is set to "2/23/2007". There is a "Transition Comments" text area and "OK" and "Cancel" buttons at the bottom.

ChildPlus automatically populates the waitlist date with the same date you specify in the **Terminate Date** field.

Family Intake

You can now look up family members using their **ChildPlus Family ID**.

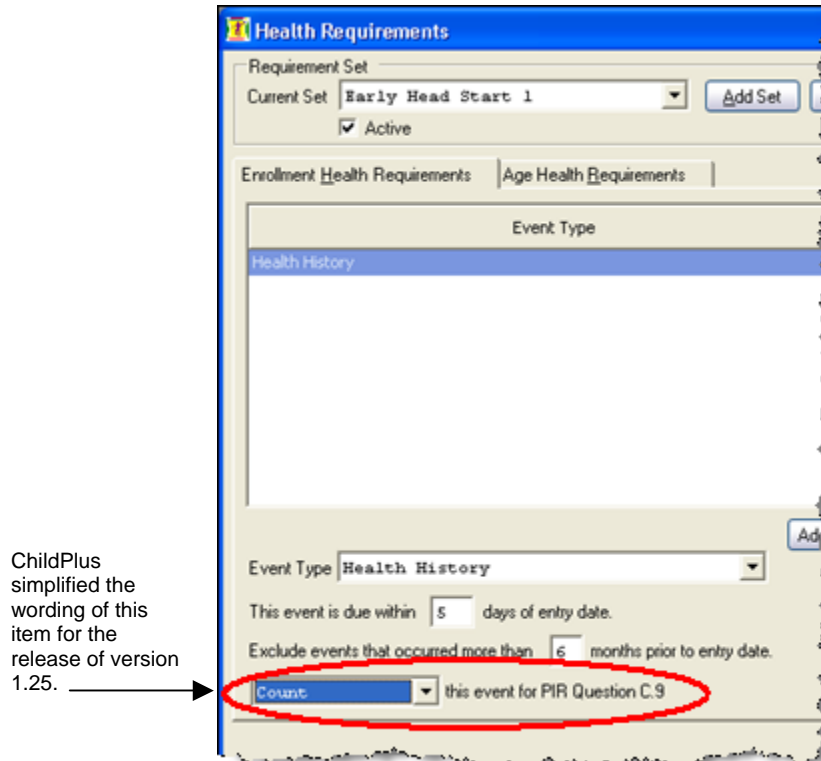


The screenshot shows a dialog box titled "Family Member Lookup". It has a header "Please enter one or more search condition(s)". Below it is a "Find a Family Member" section with several input fields: "Last", "First", "ChildPlus ID", "Application Number", "Alternate ID", "Birthday", "Family ID", and "SSN". The "Family ID" field is circled in red. There are "Add Family", "Find", and "Cancel" buttons at the bottom.

You can use this field to search for family members based on their **ChildPlus Family ID**.

Health Requirements

ChildPlus modified some of the wording on the setup screen for **Health Requirements** to help simplify the process of setting up requirements. This change only affects the last setup item on the screen. This item formerly read *This is/is not a PIR requirement*; however it has been changed to *Count/do not count this event for PIR question C.9*.



Immunizations

Changes to **Immunizations** for the release of version 1.25 include the default order in which immunizations are displayed on the screen and printed immunization records.

Immunization Schedule Setup

The default order in which immunizations are displayed on the screen in ChildPlus has been modified. This change affects both the **Immunizations Schedule Setup** screen and the **Immunizations** screen.

The default order in which immunizations are displayed has been changed on this screen.

In the Due fields, enter the number of days between each scheduled dose. Place an M in the Due fields of doses that you want to manually calculate when it is due. Place an X in the Due fields for immunizations that require less than 5 doses.
 * The First Immunization Due date will be calculated from the child's birthdate.
 ** The Second, Third, Fourth and Fifth Immunization Due dates will be calculated based on the previous dose's date.

[View CDC Immunization Schedule](#)
[View Immunization Training Video](#)

Save Close

Printed Immunization Records

When you print a child's immunization record from the **Immunizations** screen, ChildPlus now displays the user name of the person who printed the record.

ChildPlus displays the username of the person who printed the immunization record here.

2/20/2007
 11:23 am
 janedoe

Page 1
 ChildPlus

Sandy Springs Child Development Prg

Andrew-Ivan, Jessica Birthday 04/13/2004 Current Age: 2 Years

Initial Status: Not Received All/Pastdue Current Status: Up-To-Date All Possible for Age/Bel Next Immunization Due Date 05/30/2008

	First	Second	Third	Fourth	Fifth	Next Due
Polio	7/15/2004	12/14/2004	2/24/2005			08/07/2008
DTaP	7/15/2004	12/14/2004	2/24/2005	9/13/2005		05/30/2008
MMR	09/13/2005					06/09/2008
Hib	7/15/2004	12/14/2004	8/12/2005			
HepatitisB	4/13/2004	7/15/2004	12/14/2004	02/24/2005		
Varicella	09/13/2005					
HepatitisA	04/10/2005	10/07/2005				
PCV	05/31/2004	07/30/2004	09/30/2004			
Influenza	12/14/2004					
Tdap	12/14/2004					

Fixes

The following table lists the additional fixes that ChildPlus incorporated into the release of version 1.25:

ChildPlus DataEngine Fixes	
Screen	Description
Agency Information	ChildPlus no longer displays an error message if you attempt to edit the Agency Information screen when the database contains duplicate Phone Number records for staff members entered in Personnel .
Enrollment	ChildPlus no longer displays an error message if a user attempts to transfer a participant to a classroom that the user does not have security access to.
Health	ChildPlus will close the Health screen if you use the CTRL+C hotkey combination after selecting a growth assessment.
Purge Data	ChildPlus will not allow you to purge a program term that still has participants enrolled in it.

Reports

ChildPlus both enhanced and modified existing reports for the release of 1.25. Because many of these fixes were minor, we have only listed changes that directly affect users in this document.

New Reports

ChildPlus added a new report, **CACFP Reimbursement Summary**, for the release of version 1.25.

CACFP Reimbursement Summary (2371)

The **CACFP Reimbursement Summary** (report number 2371) provides you with a quick summary of important CACFP information for each classroom. It includes the following data: operating days; the number of participants receiving free, reduced, and paid meals; and meals served.

This report is accessible by clicking on **Reports** and selecting **Attendance – Individual**.

Sandy Springs Child Development Prg		Operating Days	CACFP Free	CACFP Reduced	CACFP Not Elig	Breakfast	AM Snack	Lunch	PM Snack
Head Start 2006-2007									
Decatur Center									
Classroom A		19	16	1	0	361	361	361	361
Classroom D		85	13	4	2	1,392	0	1,401	1,360

Report 2371 provides you with a quick summary of important CACFP information.

LiveReport

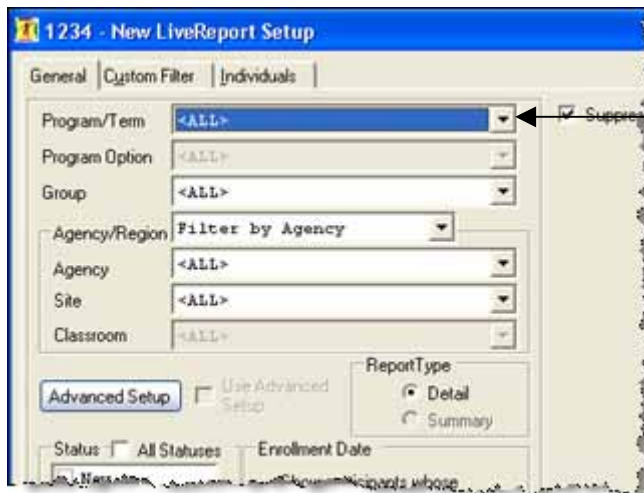
Changes to LiveReport for the release of version 1.25 include the ability to create reports that show the attendance records of children who have transferred from different programs as well as the program terms that display on a report.

Attendance

LiveReports based on attendance will now display all attendance records for transferred participants.

Program Terms

Whenever you choose **<ALL>** from the **Program/Term** list, ChildPlus will only include program terms that are active on your report.



If you select **<ALL>**, ChildPlus will only include program terms that are currently active on the report.

Modifications to Existing Reports

The following table lists the different reports that ChildPlus modified for version 1.25:

CPDE Reporting Fixes & Enhancements			
CPDE Report	CPDE Report #	Found Under the Following Reports Menu	This report...
Assessment Charts	5430	Assessment	Displays assessment items in the order that they were set up on the Assessment Instrument Setup screen.

CPDE Reporting Fixes & Enhancements			
CPDE Report	CPDE Report #	Found Under the Following Reports Menu	This report...
Participant CACFP Roster	2370	Attendance-Individual	Prints <i>SnapShot Mode</i> in the report header if you generate this report using SnapShot Mode. In addition, ChildPlus prints <i>Current Location and Status</i> if you select Using Current Location and Status on the Report Setup screen.
Training Attendance Log	1315	Career Development	Also includes individuals who are not staff members (for example, family members & in-kind volunteers).
Management Report – Enrollment	2001	Enrollment	Prints <i>SnapShot Mode</i> in the report header if you generate this report using SnapShot Mode. In addition, ChildPlus prints <i>Current Location and Status</i> if you select Using Current Location and Status on the Report Setup screen.
Management Report – End of Month Enrollment	2005	Enrollment	No longer displays participants who were enrolled in program terms that have been purged from the system.
Master List of Participants	2110	Enrollment	Prints <i>SnapShot Mode</i> in the report header if you generate this report using SnapShot Mode. In addition, ChildPlus prints <i>Current Location and Status</i> if you select Using Current Location and Status on the Report Setup screen.
Primary Language and Race	2180	Enrollment	No longer duplicates the names of children who are members of dual custody families.
Health History	3010	Health	Displays actions that are scheduled in chronological order.
Health Actions	3050	Health	Now properly filters actions when you select Scheduled on the Report Setup screen.
In-Kind Amount and Value	4310	In-Kind	Now lets users choose from all sites and classrooms on the Report Setup screen, regardless of their site and classroom level security settings. No longer displays an error message if an observation note that takes up more than one page is included on the report.

CPDE Reporting Fixes & Enhancements			
CPDE Report	CPDE Report #	Found Under the Following Reports Menu	This report...
Monthly In-Kind Amounts	4315	In-Kind	<p>Can now be run with a date range. In previous releases of ChildPlus, specifying a date range sometimes resulted in an error as the report was generating.</p> <p>Now lets users choose from all sites and classrooms on the Report Setup screen, regardless of their site and classroom level security settings.</p>